

## TERMINAL BOXES TECHNICAL SPECIFICATIONS



### MATERIAL

Enclosure material: Copper free Aluminium or stainless steel SS316L

### Ex CODE

Ex marking:  II 2 GD  
Ex db IIC T6 ... T4 Gb  
Ex tb IIIC T85°C ... T135°C Db

### MECHANICAL FEATURES

Degree of protection: IP66  
Temperature: -50°C to +85°C  
Threaded holes: ISO Metric / ANSI B1.20.1 NPT


### ELECTRICAL FEATURES

Max. rated voltage: 690 VAC / VDC  
Max. rated impulse voltage: 8 kV (max. 10 sec.)  
Frequency: 50 / 60 Hz  
Maximum rated current: 109 A  
Max. rated cross section: 35 sqmm

### Ex FEATURES

Standards: EN 60079-0 / EN 60079-1 / EN 60079-31  
IEC 60079-0 / IEC 60079-1 / IEC 60079-31  
Suitable for: Zone 1 / Zone 2 / Zone 21 / Zone 22

### CERTIFICATES

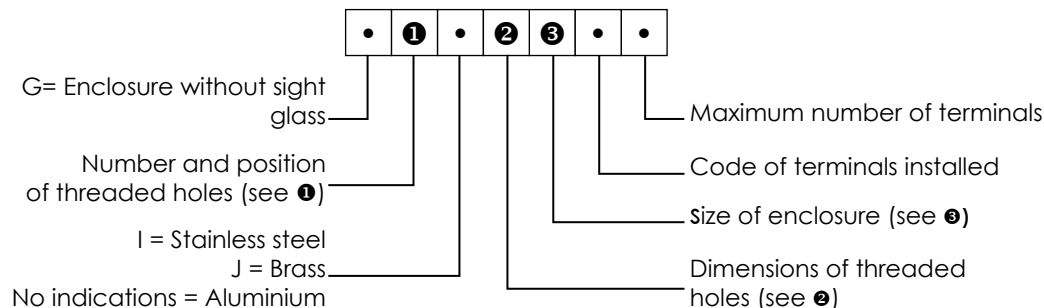
Certificates Number:  FTZÚ 15 ATEX 0182X  
 FTZÚ 15.0035X  
 TR Cu certificate available upon request  
 INMETRO certificate available upon request

### NOTE

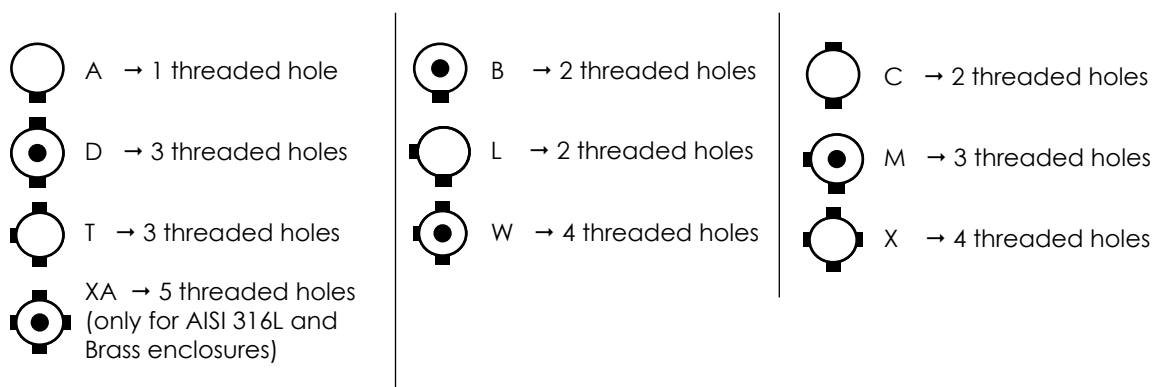
Certificate for Group I available.

## TERMINAL BOXES TECHNICAL SPECIFICATIONS

### TYPE DESIGNATION OF INSTRUMENT ENCLOSURES



❶ Number and position of threaded holes (for Stainless steel and brass instrument enclosures):



❷ Dimensions of threaded holes:

1= 1/2" NPT	20= M20x1.5
2= 3/4" NPT	25= M25x1.5
3= 1" NPT	32= M32x1.5
4= 1.1/4" NPT	40= M40x1.5
5= 1.1/2" NPT	50= M50x1.5
6= 2" NPT	63= M63x1.5

K = Mixed

In case of entries having different threading and/or dimensions on the same enclosure, the marking will include the letter "K" and the layout of the threaded holes will be attached to the operating and maintenance manual.

❸ Size of the enclosures (all dimensions  $\pm 3$  mm):

#### AISI 316L and Brass Enclosures

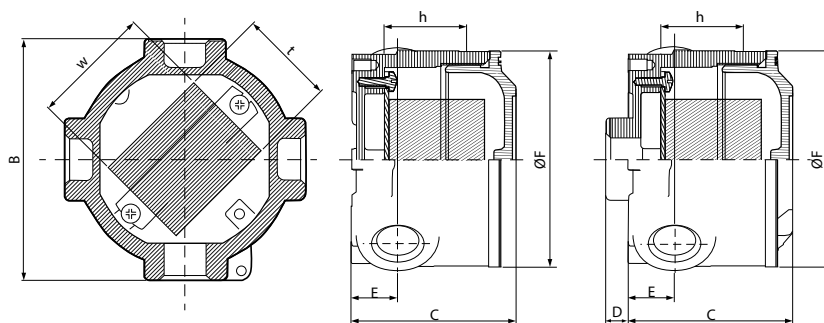
4 =  $\varnothing$  71 mm;  
6 =  $\varnothing$  90 mm;  
6A =  $\varnothing$  90 mm;  
7 =  $\varnothing$  112 mm;  
8 =  $\varnothing$  131 mm ;  
9 =  $\varnothing$  146 mm

#### Aluminium Enclosures

4 =  $\varnothing$  71 mm;  
6 =  $\varnothing$  90 mm;  
6A =  $\varnothing$  90 mm;  
8 =  $\varnothing$  130 mm;  
9 =  $\varnothing$  145 mm ;

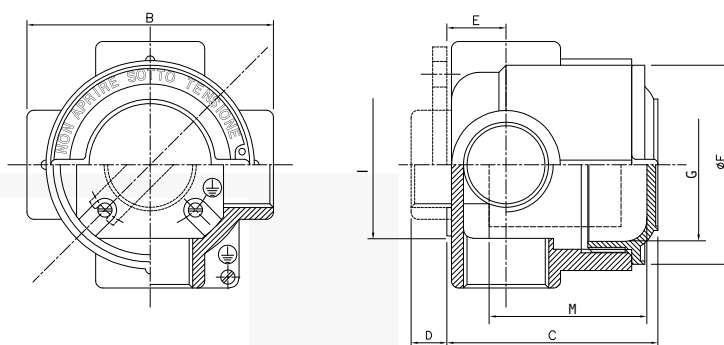
# ENCLOSURES

## AISI 316L AND ALUMINIUM TERMINAL BOXES DRAWINGS AND DIMENSIONS



AISI 316L TERMINAL BOXES - WITHOUT WINDOW AND WITHOUT EXTENSION

Size	External dimensions (mm)					Max. dimensions terminal strip (mm)			Max. volume terminals strip (dm <sup>3</sup> )
	B	C	D	E	ØF	h	w	t	
4	80	69	9	20	71	40	30	28	0,033
6	100	68	9,5	22,5	90	40	50	35	0,070
6A	100	73	9,5	22,5	90	45	50	35	0,078
7	126	82	11	24	112	50	65	45	0,146
8	145	99	9,5	27	131	65	70	60	0,273
9	161	115	9,5	27	146	75	85	65	0,414



ALUMINIUM TERMINAL BOXES - WITHOUT WINDOW AND WITHOUT EXTENSION

Size	External dimensions (mm)					Max. dimensions apparatus (mm)		
	B	C	D	E	ØF	M	I	G
4	80	77	9	20	70	49	51	51
6	100	78	8	20	90	49	70	70
6A	100	86	8	23	90	57	70	70
8	138	113	14	32	130	80	98	103
9	150	126	14	36	145	90	112	118

Dimensions and weights are approximate and subject to change without notice.